

SATU 90'  
SUPERYACHT  
SPORTFISH



# SATU 90' SPORTFISH



## A SUPERYACHT SPORTFISH COMBINING SPEED WITH LUXURY & ATTENTION TO DETAIL

*Satu 90'* is the first of a new class. Satu Marine's vision was to create a high-performance Sportfish Yacht combined with the luxury and attention to detail of a World Class Superyacht.

Satu Marine brought together elite designers, engineers, big game anglers, and equipment manufacturers to design the first Superyacht Sportfish. Yachting Developments, a builder with multiple Superyacht of the Year Awards, delivered the attention to detail to make the *Satu 90'* a Superyacht Sportfish.

Beneath her beautiful lines and classic styling, *Satu 90'* has speed, range, maneuverability to turn on a dime, and the power to back down fast when needed. She has a top end speed in excess of 33 knots, and will cruise effortlessly at 30 knots. With over a 2600 nautical mile range, she is designed to access in comfort remote untapped international fishing grounds. Her high speed planing hull provides smooth, fast, dry travel.

All of the systems on board are superyacht quality, most are redundant to ensure uninterrupted performance and safety. World class sound design provides personal comfort whether travelling the high seas or on the hook in a remote bay.

The open flybridge design provides excellent visibility as well as comfortable space for outdoor dining and relaxing.

The heart of the flybridge helm is SAM Electronics' top-of-the-line Integrated Navigation and Command System. Data is displayed on three 19-inch Hatteland monitors with custom control panels.

Designer	Ullberg Yacht Design & Engineering	
LOA	90.0ft	27.43m
LWL	82.1ft	25.03m
Beam	23.0ft	7.01m
Draft	4.11ft	1.51m
Displacement (50% load)	164,000lbs,	73,374kg
Fuel	4500 US gal	17,034ltrs
Water	750 US gal	2,839ltrs
Propulsion	2 x MTU 16V-2000CR 2400bhp @ 2450rpm	
Generators	2 x Caterpillar C4.4 58kw/67.5kva	
Construction Type	Composite	
Design Max Speed	33 knots	
Cruise Speed	30 knots	
Range	2600 nautical miles	
Project Management	Walker Projects	
Hull Structure	SP Systems	
Interior	Robinson Marine Interiors/Owner	
Builder	Yachting Developments	





## SATU 90' SPORTFISH



## SALON: Spacious Light & Airy

The interior is elegant yet clean and contemporary and built from the timber of a single Japanese Ash tree.

The feeling is one of light and airy spaciousness. Attention to detail resonates in the matched grain of ash, to the design of the reveal in each veneer panel.

All joinery is beautifully customized to safely store hand blown Steuben crystal barware and fine wine, and ample enough to store everything you need.

Whether you lower the sun shades to enjoy the state-of-the-art entertainment system, relax on the custom sofa with a favorite book, or play a game of chess at the Christian Liaigre desk, the salon is the hub for entertainment or relaxation.





## SATU 90' SPORTFISH



### GALLEY: Simply Elegant & Efficient

The galley has a spacious open design with a perfectly seamless, single-piece brushed stainless countertop and integral double sink.

Hardware is Dornbracht Platinum. Cooking equipment is commercial quality, yet elegantly finished. The fine Wedgewood Bone China and all other utensils are expertly dish pegged to hold them in place.

Adjacent to the galley is a leather dinette with Wenge dining table, and a stainless-clad pantry houses larger refrigeration and dry goods storage.

Attention to the finest detail is the emerging theme in the *Satu 90*.





## SATU 90' SPORTFISH



## MASTER SUITE: A Peaceful Retreat

Each cabin is thoughtfully designed, with the result being light, spacious, quiet retreats.

Use of beautiful timbers, natural fabrics, and open design invites you in.

Special attention to sound insulation creates a peaceful environment.

Storage space is grand and will allow you to cruise for months.

A Japanese Ash desk provides space for all the necessary tools to keep you in touch with work and home, and the state-of-the-art entertainment system can be enjoyed in privacy.





## SATU 90' SPORTFISH



## ENSUITES: Spacious Quality

The theme of spacious quality carries through to each ensuite.

Each wash basin is sculpted from a single piece of Wenge, and the vanity mirror hides an ample cabinet.

Showers are Japanese Ash with Wenge floors, and a mirrored enclave will hold shower accessories. The master suite bath is a relaxing retreat with a Wenge soaking tub.

All hardware is Dornbracht Platinum.





## SATU 90' SPORTFISH



## ENGINE ROOM & PUMP ROOM: State-Of-The-Art Power & Control

*Satu 90* is magnificently powered by two 16V 2400hp MTU engines.

The two 58k Cat Generators provide plenty of redundant power to drive all systems.

Heinen & Hopman designed and built state-of-the-art refrigeration and mechanical systems to handle even the most extreme conditions.

There is no question the *Satu 90* will cruise wherever you desire for months on end in comfort and style.



SATU 90'  
SPORTFISH



ENGINE ROOM







## SATU 90' SPORTFISH



World Class Anglers designed the *Satu 90'* cockpit.

The International Fighting Chair articulating pedestal provides rod tip clearance while fighting a world record marlin, and the transom door is large enough to bring in a "grander." The fighting chair can be converted in minutes to a dining table for six.

Cockpit features include live wells, tuna tubes, fish boxes with ice maker, outriggers, plenty of tackle and gear storage.

The flybridge overhang provides sunshade to the mezzanine while relaxing and viewing the fish action.

The face of the mezzanine houses an outdoor cooking suite, refrigeration and gear storage. It is watertight to let you back down on the big ones.

## COCKPIT: World Class Fishing or Dining Al Fresco





## SATU 90' SPORTFISH



## FLYBRIDGE HELM: Comfort and Control

Cruise anywhere in the world with Satu in the perfect balance of comfort and control.

Sam Electronics Integrated Bridge Systems and MTU Integrated Ship Monitoring Systems display all the information the Captain needs on the Hatteland helm monitors. Communications are a breeze with VSAT, TVRO and VHF communications. Visibility is optimal from the cockpit to the bow. 13 Extreme CCTV cameras positioned throughout the yacht enable you to view critical areas of the vessel.

Dine al fresco at the teak table, read a book, or relax and sun in the forward flybridge lounge seating. A cold drink or snack is easily available in the flybridge bar.





SATU 90'  
SPORTFISH

BEAUTY,  
SPEED &  
ELEGANCE







SATU 90'  
SPORTFISH



Unrivalled visibility of both water and cockpit, plus all major systems to operate Satu are at your fingertips. The tower was expertly designed, manufactured and installed by Bausch American Towers to enhance the ultimate fishing experience.

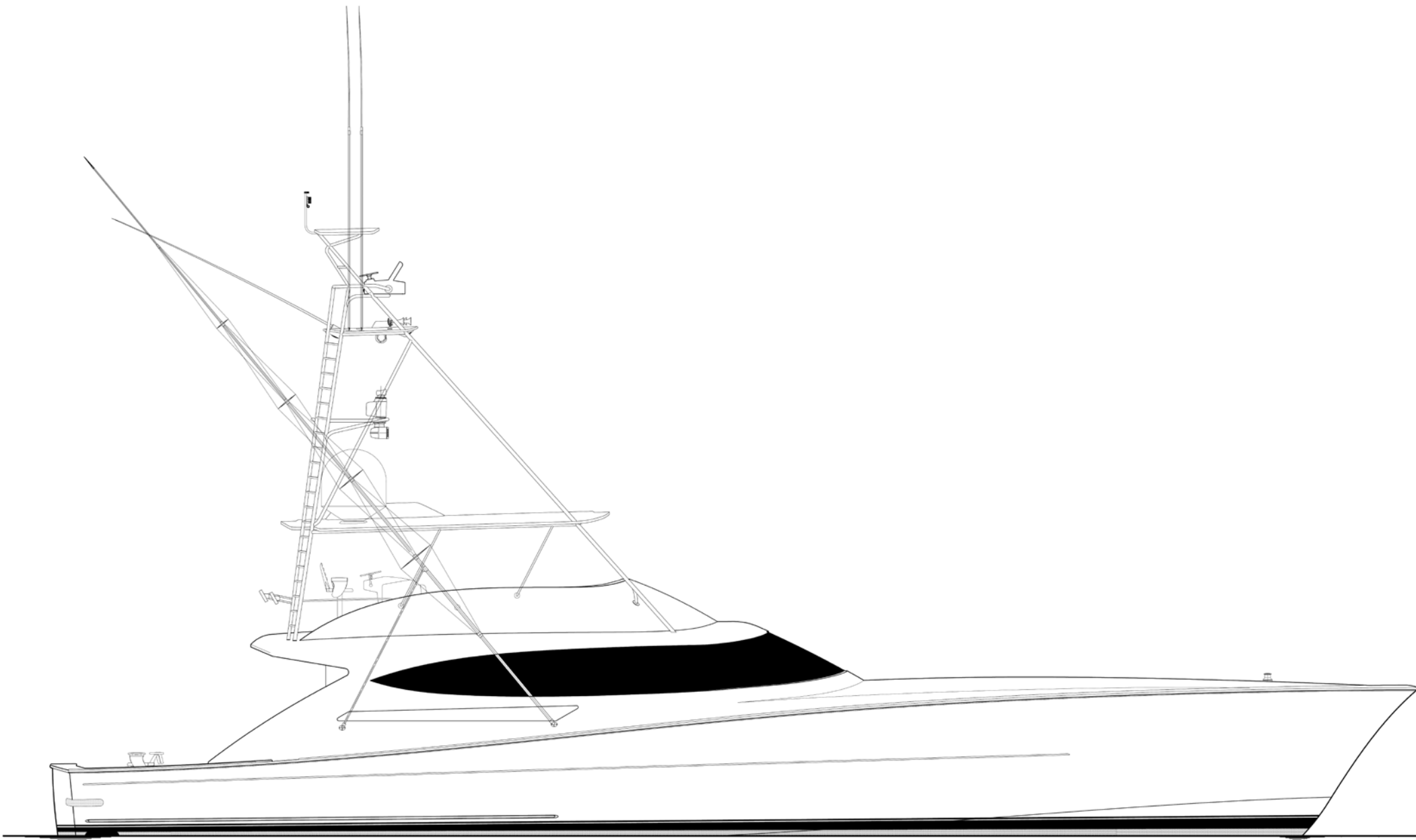
TOWER HELM:  
Guarantee the  
Ultimate Fishing  
Experience





SATU 90’ SPORTFISH

SATU 90’ SPORTFISH



Interior / Equipment Description

Bow

Flare & chine  
Classic look  
Dry & comfortable ride  
Cutwater SS 2205

Bottom

Draft 5 foot  
Clean bottom  
Drop down bow thruster  
Intake screens SS 2205  
Lightening protection  
Tunnels  
Shafts  
Strut (2) SS 2205  
Props Bruntons  
Rudders SS 2205  
Trim tabs hydraulic  
Arenson P & S

Transom

Classic Tumble hull shape  
Freeing ports 316L  
Transom door  
Concealed hinges 316L  
Transom door step built in hull  
Dive /swim ladder removeable  
Underwater lights (4)  
Deepsea  
Zinc pockets (2)

Cockpit

Teak Sole  
Teak Coverboards  
International fighting chair teak 130lb  
Tip clearance with standard rod  
Livewells (2)  
Freeing ports SS 316L  
Warping winch (2)  
Rondal  
Cleats P & S SS 316L  
Side storage lockers P & S  
Shore power P & S  
Utility connections P & S  
Freshwater washdown P  
Saltwater washdown S  
Hand shower  
Fish box w/ice flaker feed  
Eskimo saltwater ice flaker  
Cove lighting LED  
Rod holders (6) Bayliss

Mezzanine Face

Heinen & Hopman Freezer 316 L (Port)  
Drawers storage (Port inboard)  
Watertight engine room access  
Carbon fiber/hydraulic Rondal (center)  
Sink SS 316 L pull out (Starboard)  
Cooking center SS 316L pull out  
Charbroiler electric  
Diva induction cooktop  
Liferaft 8 man offshore Winslow  
Ditchbag  
Compartments watertight

Lazzerette

Rondal water tight hatch  
Jastrom steering  
Eskimo ice flaker  
Saltwater pump Baraccuda  
Dive bottle storage (6)  
Clark dive compressor  
Fuel oil integrated tank  
Sight gauge fuel oil  
Fuel oil UV light  
Extreme CCTV cameras (2)  
Bilge pump pick up

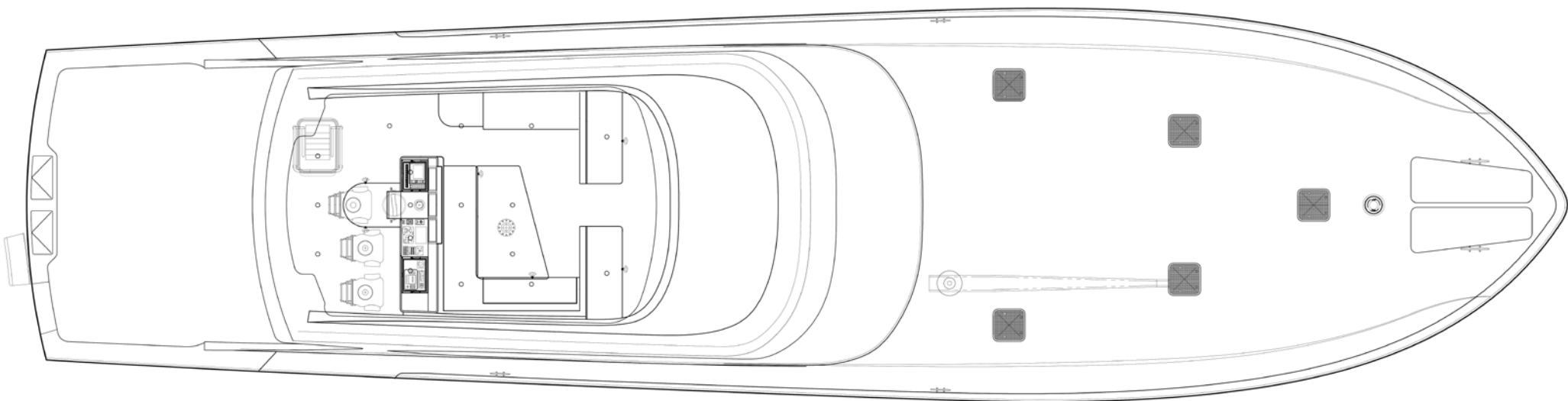
Mezzanine

Seating port and starboard  
Folds out into a day bed(s)  
Leather Spinneybeck AQUA  
Salon sliding door Rondal  
Watertight  
Chemically hardened laminated glass  
Kevlar / aluminum armored  
Extreme CCTV  
Speakers port and starboard  
LED down lighting  
Track for cockpit sun shade  
Teak Sole



SATU 90’ SPORTFISH

SATU 90’ SPORTFISH



Interior / Equipment Description

- Foredeck**  
Toe rail teak  
Custom Fairleads SS 316L  
Forward P & S  
Midship P & S  
Aft P & S  
Rub rail 1/2 round SS 316L  
Cleats SS 316L Rondal  
Forward P & S  
Midship P & S  
Aft P & S  
Anchor Deployment system P & S Rondal  
automatic deployment retrieval system  
watertight carbon fibre hatches P & S  
hydraulic SS 316 L anchor arms P & S  
anchors (2) SS P & S  
automatic anchor washdown P & S  
Fender/line storage P&S (in anchor lockers)  
Freshwater washdown (in anchor locker)  
Compressed air (in anchor locker)  
Winch SS Hydraulic Rondal  
Hatches Carbon Fibre (5) Rondal  
Davit carbon fibre 2000 pounds C-Quip  
Fuel Fill P  
Tender custom 19’ Flats with diesel/jet drive

- Flybridge Equipment**  
Integrated Bridge SAM Electronics  
Displays(3) 19”Hatteland switchable  
Chartplotter 1100 ECDIS IMO  
Adaptive Auto Pilot  
Route planning  
AIS  
Route Monitoring  
GPS  
Fibre optic gyro  
Echosounder  
ARPA radar  
Speed log  
Conning  
Weather station  
MTU Integrated ship monitor system  
VHF / intercom ICOM M-604  
Custom instrument panels SS 316L(3)  
CCTV system DVR w/ 12 cameras  
Searchlight control Carlisle Finch  
Anchor deployment control Rondal  
Bow thruster drop down control  
Horns Kahlenberg T-2 control  
Flybridge hardtop  
VSAT Seatel 4006  
TVRO Seatel 4004  
Running lights Lopolight

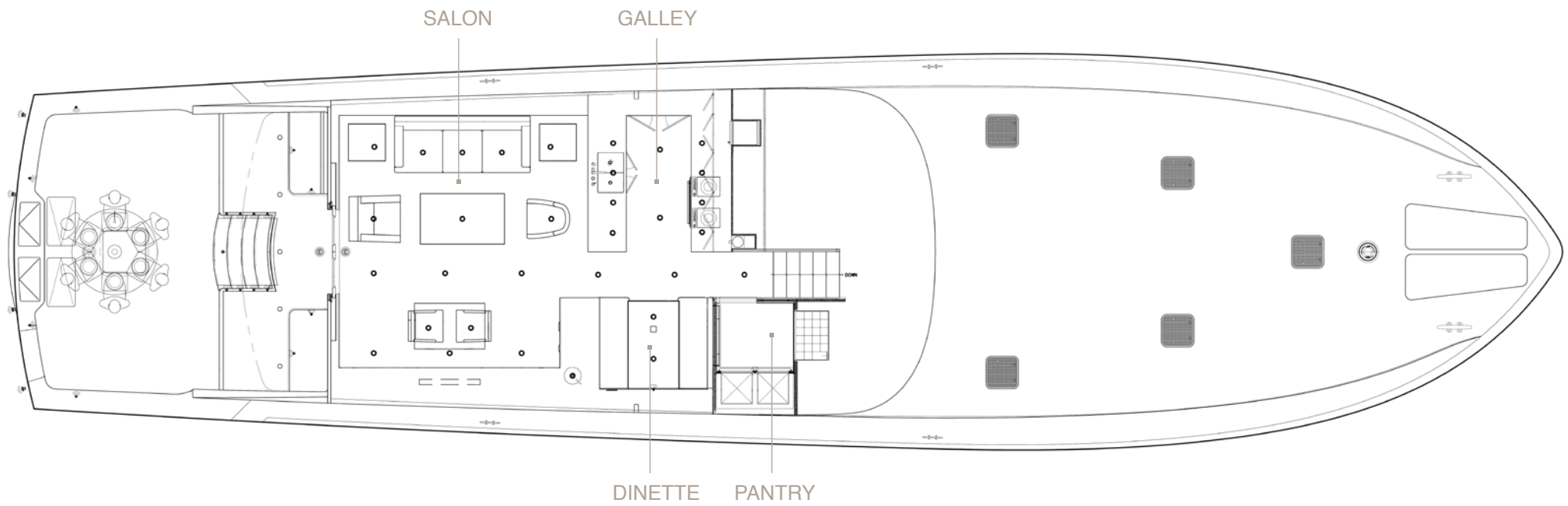
- Flybridge**  
Helm seats (3) International  
Entertainment center P  
Counter top / sink hot & cold  
Liquor / glass storage  
Ice maker Hoshizaki  
Refrigerator custom Heinen & Hopman  
Plate and dish storage  
Dinnette with L seating  
Teak table seating 6 custom  
Columns (2) SS 316L  
Leather cushions (Spinneybeck Aqua)  
Rod storage under L seating  
Forward seating for 6 (3 and 3)  
Leather cushions (Spinneybeck Aqua)  
Storage under cushions  
Storage in eye brow  
Liferaft 8 man offshore Winslow  
Ditch bag  
Storage P & S outboard  
Flybridge hardtop  
LED running lights P&S Lopolight  
LED lights dimmable  
LED red night lights  
Speakers  
CCTV Extreme  
Teaser reels (2) Miya Epoch in pocket  
Crestron control of lighting/entertainment

- Tower**  
Tower custom Bausch American  
Outriggers (2) Rupp  
Platform Radar SAM  
Buggy top platform  
Searchlight 200W Carlisle Finch  
Kahlenberg Horns T-2  
Leather bench seat  
Integrated Bridge SAM Electronics  
same as bridge  
Displays(2) 19”Hatteland switchable  
Buggy hardtop  
GPS antenna  
Off air TV antenna Naval  
VHF antenna (2) Digital Antenna  
AIS antenna SAM  
Weather station SAM  
Lighting Rods (2)  
LED downlights  
Running light 360 Lopolight



SATU 90’ SPORTFISH

SATU 90’ SPORTFISH



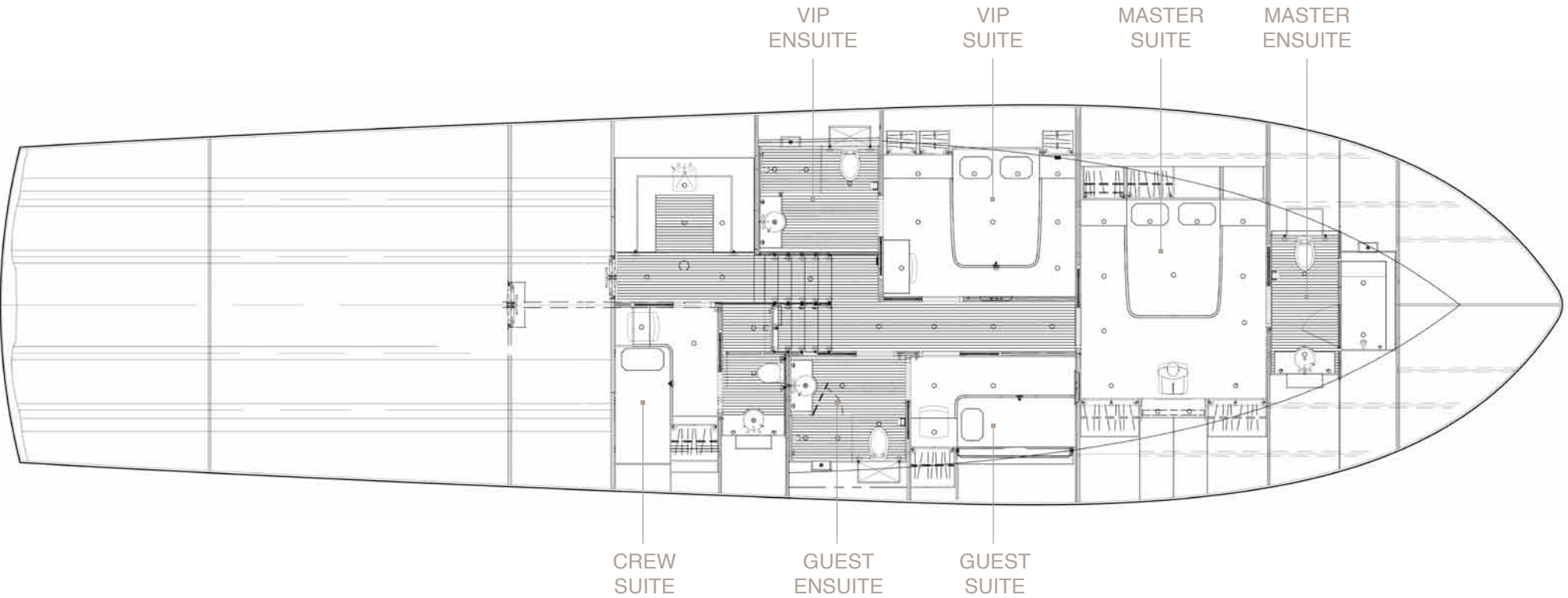
Interior / Equipment Description

<p><b>Salon</b></p> <p>Japanese ash veneer</p> <p>Spinneybeck leather headliner (throughout)</p> <p>LED down lighting dimmable</p> <p>Hardened curved windows</p> <p>Wenge floors</p> <p>Entertainment Center</p> <p>47” HDTV LCD 1.5” on lift</p> <p>DVD/Surround sound 5.1 Naim</p> <p>Audio Request hard drive 7 zones</p> <p>Crestron lighting/temperature/ CCTV/ music</p> <p>Printer /fax/scanner/copier</p> <p>Japanese ash veneer storage units</p> <p>Leather top desk Christian Liaigre</p> <p>Desk chairs (2) Christian Liaigre</p> <p>Custom 8 foot sofa</p> <p>End tables with lamps Christian Liaigre</p> <p>Leather chair (1) Christian Liaigre</p> <p>Cocktail table Christian Liaigre</p> <p>CCTV Extreme</p>	<p><b>Galley</b></p> <p>Japanese Ash Custom Cabinets</p> <p>Stainless Steel 316L counter top</p> <p>Stainless Steel 316L backsplash</p> <p>Twin sinks SS 316L integrated countertop</p> <p>Miele dishwasher built in (BI)</p> <p>Wolf 36” L series oven BI</p> <p>Induction cooktop Diva (2) BI</p> <p>Panasonic microwave BI</p> <p>Commercial coffee maker BI</p> <p>Insinkerator 3/4 HP disposal</p> <p>Undercounter custom refrigerator Heinen Hopman</p> <p>Undercounter lighting</p> <p>Exhaust fan</p> <p>Wedgewood white bone china</p> <p>Place setting of 12</p> <p>Alessi stainless serving pieces and accessories</p>	<p><b>Dinnette</b></p> <p>Seating (6)</p> <p>Wenge table w/ pull out drawer</p> <p>Alessi, Nuovo Milano flatware (12)</p> <p>Spinneybeck leather cushions</p> <p>Drawers storage pull out under aft seating</p> <p>Commerical bakeware /roasting</p>	<p><b>Pantry</b></p> <p>Stainless Steel 316L lined</p> <p>Refrigerator/Freezer SS 316L custom Heinen &amp; Hopman</p> <p>Dry / liquid storage 66 gallons</p> <p>Drawer storage pull out</p> <p>Commercial vacuum bagger</p> <p>Green Star juicer</p> <p>Cuisinart 20 cup food processor</p> <p>Custom fiddling</p>	<p><b>Cave</b></p> <p>Fresh air make up air Heinen &amp; Hopman</p> <p>Tempers air w/ chiller and or heater</p> <p>Ducted to living and bilge space</p> <p>Exhaust Fan Heinen &amp; Hopman</p> <p>Lighting switchboard</p>
--	---	--	--	--



SATU 90' SPORTFISH

SATU 90' SPORTFISH



Interior / Equipment Description

<b>Guest / ensuite</b> Japanese ash interior Desk Storage over desk Bench seat leather Christian Liaigre Silk hand tied wall to wall carpet Twin oversized Pullman LED reading light (2) Mattress custom (2) TempurPedic Storage (2) pull out drawers under twin 32" HDTV LCD 1.5" thick Hitachi DVD player Naim Hatch Rondal Shade electric LED down lighting dimmable LED night / emergency lighting Flourescent lighting dimmable Leather headliner Speakers (2) Request Audio zone Temperature zone Lutron lighting Crestron control Pocket door Japanese ash	<b>VIP / ensuite</b> Japanese ash interior Desk Bench seat leather Christian Liaigre Closet Cabinet storage (2) Silk hand tied wall to wall carpet Queen over size mattress custom TempurPedic Storage (4) pull out drawers under mattress 32" HDTV LCD 1.5" thick Hitachi DVD player Naim Hatch Rondal Shade electric LED down lighting dimmable LED night / emergency lighting Flourescent lighting dimmable Leather headliner Speakers (5) Request Audio zone Temperature zone Lutron lighting Crestron control Pocket door Japanese ash	<b>Master / ensuite</b> Japanese ash interior Desk port center Bench seat leather Christian Liaigre Closet storage (2) port Cabinet storage over desk Silk hand tied wall to wall carpet Queen over size mattress custom TempurPedic Storage (4) pull out drawers under mattress Storage file in the end of mattress 42" HDTV LCD 1.5" thick Hitachi DVD player Naim HDTV lift electrical outboard of desk Hatch Rondal (2) Shade electric (2) LED down lighting dimmable Flourescent lighting dimmable Leather headliner Speakers ceiling (5.1) Request Audio zone Lutron lighting (3) Crestron control Pocket door Japanese ash <b>Ensuite</b> Wenge bath tub Medicine cabinet Hatch Rondal Hatch shade electric Skyco	<b>Ensuite / Master-VIP-Guest</b> Japanese ash interior Glass shower enclosure tempered 10mm Shower storage pocket w/ mirror Wenge sink custom Mirror over sink Vanity lights Dornbracht Dornbracht fixtures Wenge floor Toilet Headhunter Headliner painted to match leather LED downlighting Flourescent lighting dimmable Storage over toilet Lutron lighting Crestron control Pocket door Japanese ash
--	--	--	--



SATU 90’ SPORTFISH

Interior / Equipment Description

<b>Utility Room</b>	<b>Pump Room</b>
Japanese ash interior	Watertight door
U shaped cabinets below	A 30 fire rating Van Cappellen
U shaped cabinets above	30 Db sound drop Van Cappellen
U shaped counter top SS 316L	Gas release fire Tyco
Sink SS 316L integrated	Electrical cabinets custom DC / AC
Back splash 316L	Shore power convertors (2) ASEA
Dornbracht fixtures	Chillers (2) 1 for each ASEA unit
Exhaust fan over sink	Heinen & Hopman
Miele dryer SS forward	Electrical load control PLC
Miele washer SS aft	auto start generators / load shed
Fire hose reel SS 316L TYCO	Ships monitoring systems MTU
Fire control panel TYCO	House bank Northstar Gel batteries
Undercounter lighting	Inverter Mastervolt
LED down lighting	<b>Refrigeration system (2)</b>
<b>Crew / Ensuite</b>	<b>Heinen &amp; Hopman</b>
Japanese ash interior	Manifold enables isolation while running
Bunk beds Twins oversize	Easy access to both units
Storage (2) pull out drawers under bed	System designed to operate on one unit
Desk	
Bench seat leather Christian Liaigre	
Closet storage over desk	
Storage (2) pull out drawers under closet	
Freshwater storage tank integrated	
<b>Ensuite</b>	
Medicine cabinet	

<b>A/C Compressors (3) 4-ton units</b>	<b>Engine room</b>
<b>Heinen &amp; Hopman</b>	Watertight door fore and aft
Manifold enables isolation while running	A30 fire rating Van Cappellen design
Easy access to all three units	30 Db sound drop Van Cappellen design
Designed to operate on two units	Saltwater intakes and manifold SS 2205
Titanium intercooler Alfa Laval	Gas release system Tyco
Watermakers (2) 1,200 gallon / day / unit	MTU 16 V 2400 HP (2)
Designed to operate on one unit	Fuel oil filters MTU (2) Racor
Matrix	Engine start Northstar Gel Batteries (2 sets) x over
Bilge pump manifold	Transmission ZF Marine
Bilge pumps	Main engine exhausts (2) DeAngelo / Ullberg
Blige pumps pick up	Generators (2) 57 KW Catepillar
Fire pumps	Fuel oil filters CAT (2) Racor
CCTV Extreme camera	Waterdrop exhausts (2)
	Generator sound shields (2)
	30 Db drop Van Cappellen / Ullberg design
	Hinged access panels for easy servicing
	Fuel oil manifold system (3 tanks 4,500 gallons )
	Digital flow monitor
	Sight / electronic guages all tanks
	Fuel oil Separator Alfa Laval
	UV light Bug killer for each tank (3)
	Hand pump emergency

CCTV Extreme cameras (2)
Lubrication oil transfer system
Integrated Tank w/ sight guage
Engine room heat exchangers
Heinen & Hopman
Engine room demisters Delta T
Stainless steel fire dampers Heinen & Hopman
Integrated fuel oil (day tank) on center line
Bilge pump pick up

Interior / Equipment Description

<b>Hydrochamber</b>	<b>VIP Bilge</b>
Access under saloon steps (hydraulic)	Access under bed
Watertight hatch Rondal	Watertight hatch Rondal
Freshwater pressure tank Heinen & Hopman	Forward Fuel tank (integrated)
Freshwater remineralizer Heinen & Hopman	Sight gauge fuel oil
Freshwater charcoal filter Heinen & Hopman	Fuel oil UV light
Freshwater UV (2) sterilizers Heinen & Hopman	Transducers SAM
Fresh hot water tanks (2) Heinen & Hopman	Fibre optic Gyro SAM
Black & gray water system Hamann	Entertainment Racks (3)
Waste water piping SS 316L Blucher Heinen & Hopman	Air handler Heinen & Hopman
Stainless Steel 316L pipe Mapress Heinen & Hopman	CCTV Extreme camera
CCTV Extreme camera	Bilge pump pick up
Bilge pump pick up	

<b>Master Bilge</b>
Access under bed
Watertight hatch Rondal
Storage
CCTV Exteme camera
Bilge Pump Pick up
Crash bulkhead (forward)
Watertight hatch to bow thruster compartment (watertight)
Bilge pump pick up
CCTV Exteme camera





SATU MARINE

Contact Richard & Susan Newhauser

P +1 305 467 5797    [rnewhauser@satumarine.com](mailto:rnewhauser@satumarine.com)

P +1 305 788 2593    [snewhauser@satumarine.com](mailto:snewhauser@satumarine.com)

[satumarine.com](http://satumarine.com)